

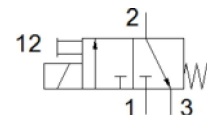
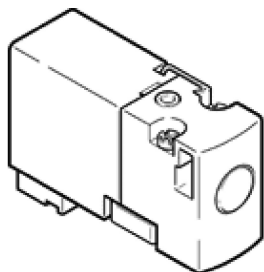
Solenoid valve

MHA1-M1H-3/2G-0,6-PI

Part number: 197008

FESTO

manifold block valve for individual and battery mounting,
particularly small design, with plug connection below (plug-in).



Data sheet

Feature	values
Valve function	3/2 closed, monostable
Type of actuation	electrical
Width	10 mm
Standard nominal flow rate	10 l/min
Operating pressure	0 ... 8 bar
Design structure	Poppet valve with spring return
Type of reset	mechanical spring
Protection class	IP40
Authorisation	c CSA us - Recognized (OL) c UL us - Recognized (OL)
Nominal size	0.65 mm
Grid dimension	10 mm
Exhaust-air function	throttleable
Sealing principle	soft
Assembly position	Any
Manual override	Pushing
Type of piloting	direct
Flow direction	non reversible
Valve position identification	Label
Maximum switching frequency	20 Hz
Switching time off	4 ms
Switching time on	4 ms
Duty cycle	100%
Electrical power consumption	1 W
Characteristic coil data	24 V DC: 1 W
Permissible voltage fluctuation	+/- 10 %
Operating medium	Compressed air in accordance with ISO8573-1:2010 [7:4:4]
Note on operating and pilot medium	Lubricated operation possible (subsequently required for further operation)
Corrosion resistance classification CRC	2
Storage temperature	-20 ... 60 °C
Medium temperature	-5 ... 40 °C
Ambient temperature	-5 ... 40 °C
Product weight	10 g
Electrical connection	Plug
Mounting type	On sub-base with through hole
Pneumatic connection, port 1	Sub-base
Pneumatic connection, port 2	Sub-base
Pneumatic connection, port 3	Sub-base
Materials note	Free of copper and PTFE Conforms to RoHS
Materials information for seals	FPM HNBR NBR
Materials information, housing	PA-reinforced PPS-reinforced